

# Residence Myslíkova 8

## Prague 2

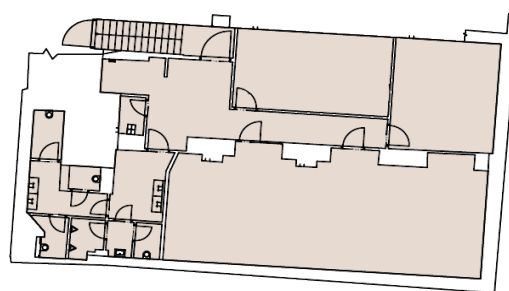
Commercial space for rent — 1<sup>st</sup> underground floor — 157,9 sqm — price on request

### Basic description of the space:

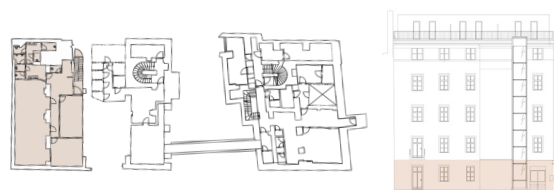
The K4 commercial space is located on the first underground floor of the building and offers an entrance from the courtyard. The space is suitable as a training center, classrooms, meeting rooms, office space for open office with meeting rooms, gallery, studio or any smaller establishment or salon. Thanks to its size, this space offers many opportunities and customization options.

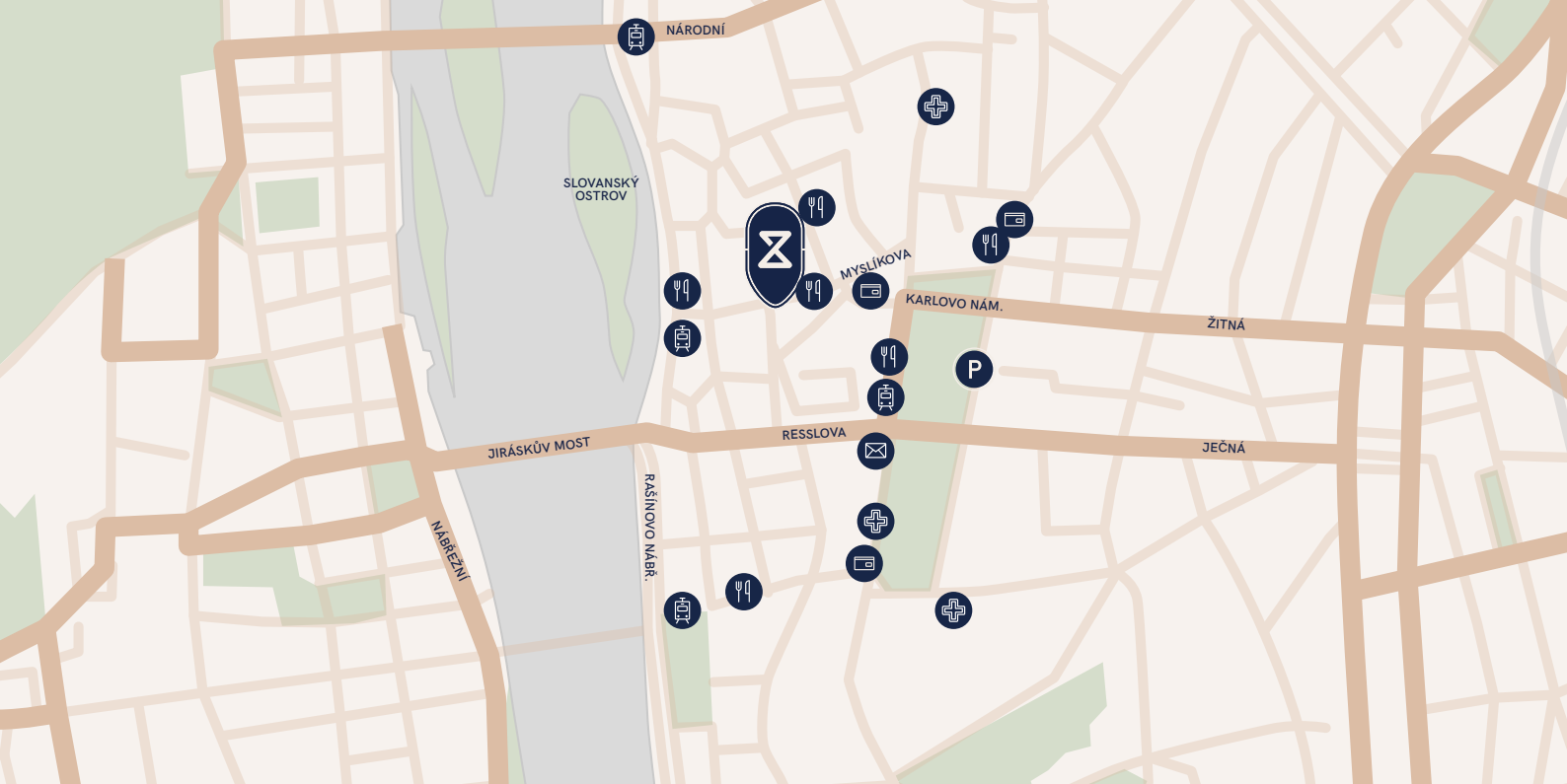
### Commercial space Myslíkova 8

Shop window to the street	no
Facilities including kitchenette and toilet	YES
Possibility to rent additional storage space in the building	YES
<b>Total price / month</b>	<b>on request</b>



1. PP





Tram stop



Train Station



Post office



Bus stop



Parking



ATM



Subway



Pharmacy



Restaurant

