

# Residence Myslíkova 8

## Prague 2

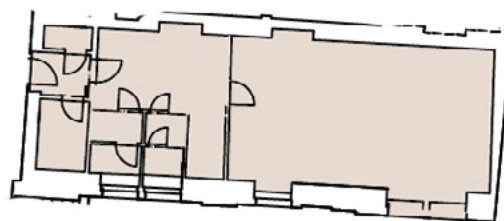
Commercial space for rent ————— 1<sup>st</sup> floor ————— 79,2 sqm ————— price on request

### Basic description of the space:

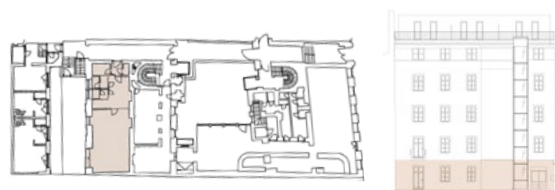
This commercial space is located on the ground floor of the building and offers an entrance from the inner block. The space is suitable as a training center, office space, gallery, studio or any smaller establishment. Thanks to its size, this space offers many opportunities

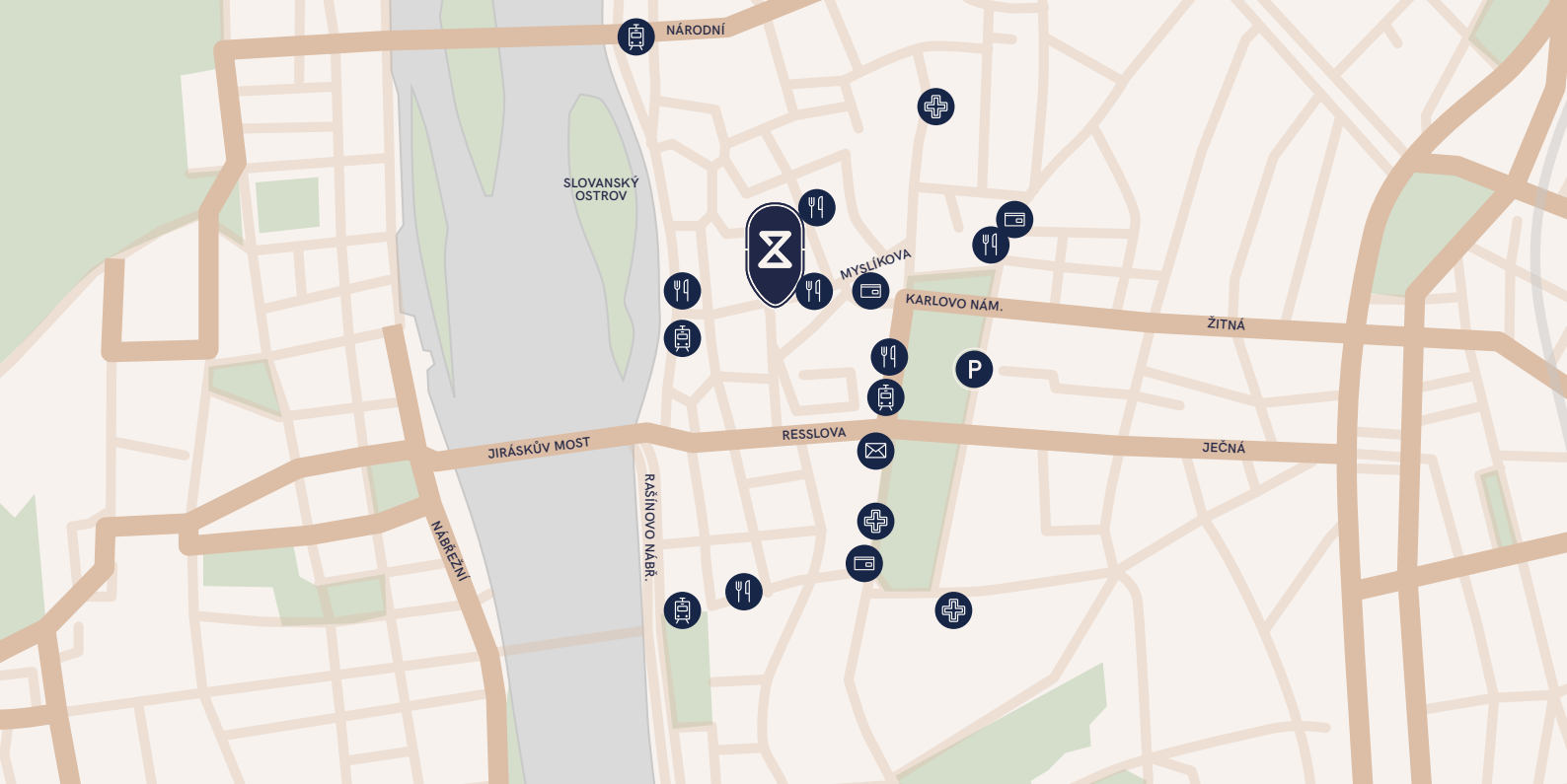
### Commercial space Myslíkova 8










Shop window to the street	NO
Facilities including kitchenette and toilet	YES
Possibility to rent additional storage space in the building	YES
<b>Total price / month</b>	<b>on request</b>



1. NP





-  Tram stop
-  Train Station
-  Post office
-  Bus stop
-  Parking
-  ATM
-  Subway
-  Pharmacy
-  Restaurant

