



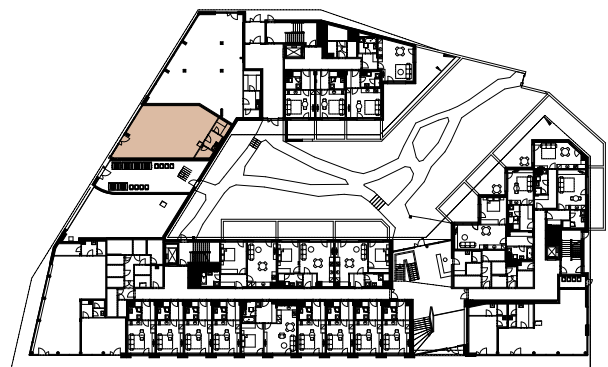
Commercial space

1<sup>st</sup> floor

101,1 sqm

### Space description:

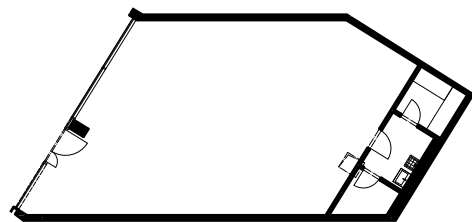
Commercial space is located on the ground floor of the building and offers direct access from the street. The space is suitable for a gastro operation (such as a bistro, café or wine bar), beauty salon, store, laundry, gallery, or any other small business. Thanks to its size, this space offers a wide range of uses and customization options to satisfy even the most demanding clients.

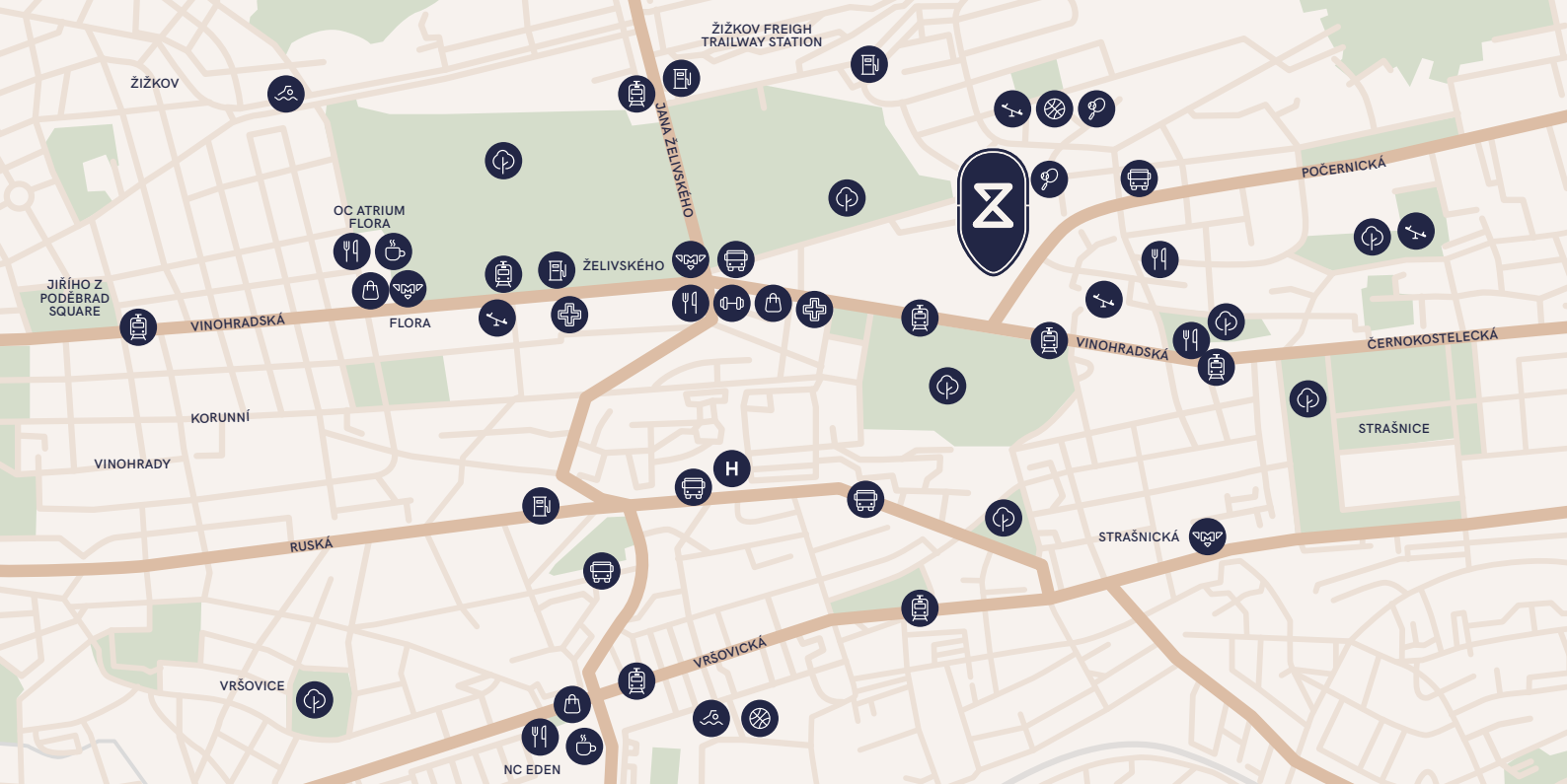

















### Commercial space QA.R2.

Wheelchair access	YES
Shop window to the street	YES
Sanitary facilities and cleaning room	YES
Parking space	Rental by arrangement
Storage space	Rental by arrangement
Terrace	NO

### Unit detail:





- |   |   |  |   |   |
|---|---|--|---|---|
|  Subway    |  Gas station |  Shop       |  Playground     |  Fitness       |
|  Tram stop |  Hospital    |  Restaurant |  Park           |  Sports field  |
|  Bus stop |  Pharmacy   |  Café      |  Swimming pool |  Tennis court |

