



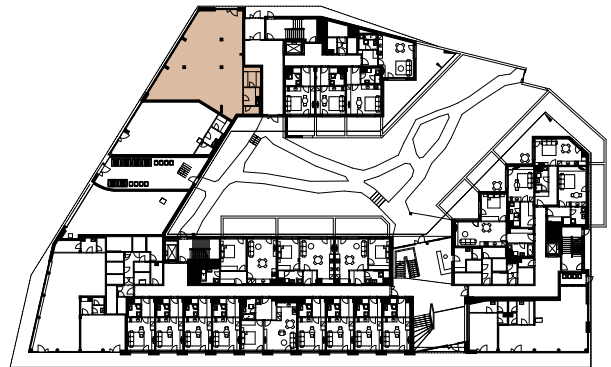
# Residence Delta Hagibor

## Prague 10

Commercial space ————— 1<sup>st</sup> floor ————— 158,2 sqm

### Space description:

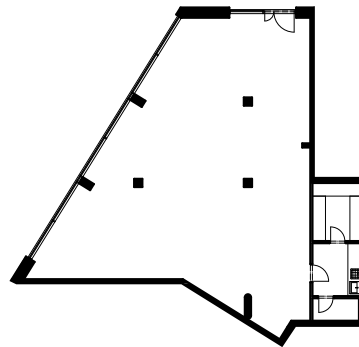
Commercial space is located on the ground floor of the building and offers direct access from the street. The space is suitable for a gastro operation (such as a bistro, café or wine bar), beauty salon, store, laundry, gallery, or any other small business. Thanks to its size, this space offers a wide range of uses and customization options to satisfy even the most demanding clients.



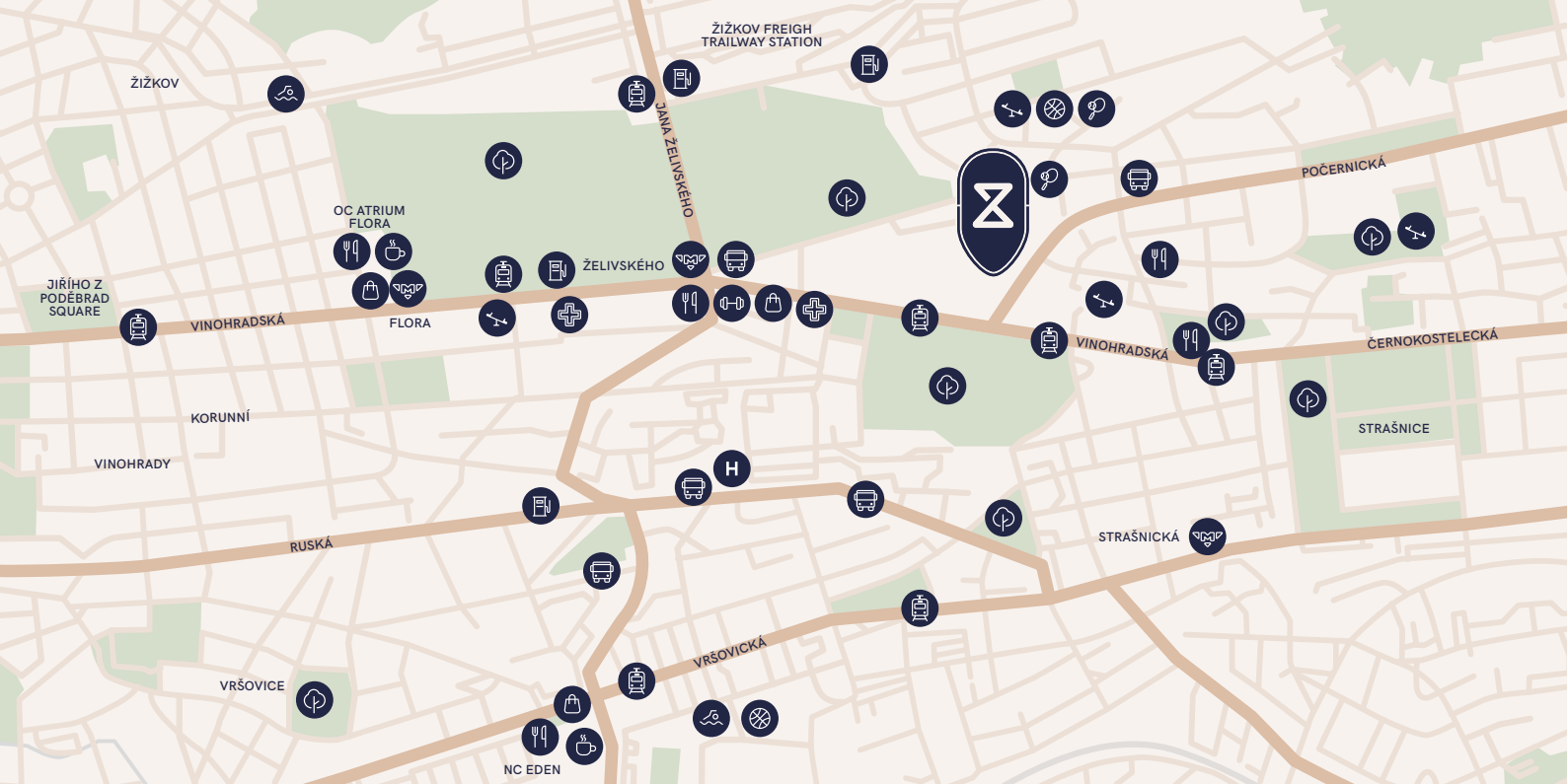
### Commercial space QA.R1.

Wheelchair access	YES
Shop window to the street	YES
Sanitary facilities and cleaning room	YES
Parking space	Rental by arrangement
Storage space	Rental by arrangement
Terrace	NO

### Unit detail:







- |  |           |  |             |  |            |  |               |  |              |
|--|-----------|--|-------------|--|------------|--|---------------|--|--------------|
|  | Subway    |  | Gas station |  | Shop       |  | Playground    |  | Fitness      |
|  | Tram stop |  | Hospital    |  | Restaurant |  | Park          |  | Sports field |
|  | Bus stop  |  | Pharmacy    |  | Café       |  | Swimming pool |  | Tennis court |

