

Residence Na Zderaze 10

Prague 2

Commercial space

1st floor

126 sqm

60 000 CZK

Space description:

Part of the commercial space is located on the ground floor of the building. The entrance to the area is directly from the street. Non-residential space is ready for rent in the shell & core standard. The space is suitable for a cafe, restaurant or business unit.

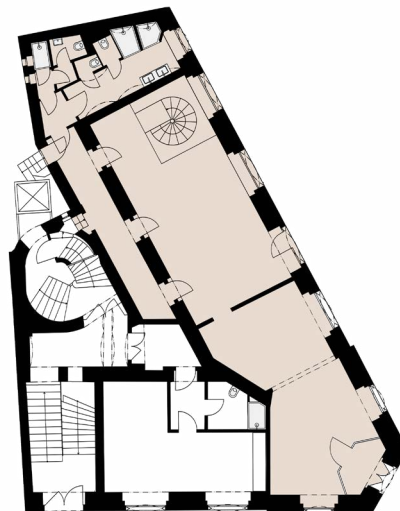
Commercial space Na Zderaze 10

Shop window to the street YES

Facilities including kitchenette and toilet YES

Possibility to rent additional storage space in the building YES










Total price / month 60 000 CZK



1st floor





-  Tram stop
-  Bus stop
-  Subway station
-  Train Station
-  Parking
-  Pharmacy
-  Post
-  ATM
-  Restaurant

