

Residence Na Zderaze 10

Prague 2

Commercial space — 1st + 2nd underground floor + 1st floor — 376 sqm — 115 000 CZK

Space description:

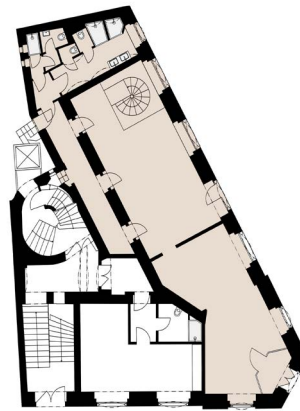
Part of the commercial space is located on the ground floor of the building and part in the basement. The entrance to the area is directly from the street. Non-residential space is ready for rent in the shell & core standard. The space is suitable for a cafe, restaurant or business unit.

Commercial space Na Zderaze 10

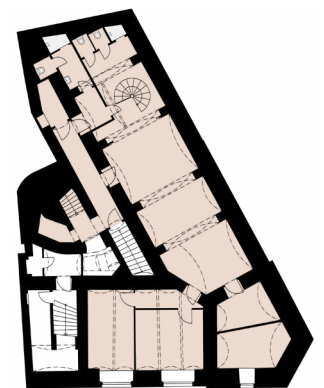
Shop window to the street	YES
Facilities including kitchenette and toilet	YES
Possibility to rent additional storage space in the building	YES

Total price / month 115 000 CZK

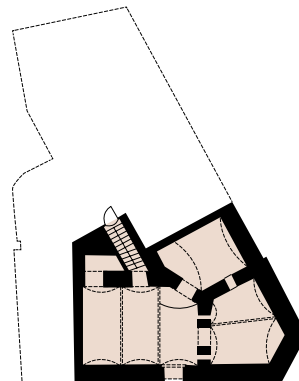
1st + 2nd underground floor + 1st floor












1st underground floor



2nd underground floor





-  Tram stop
-  Bus stop
-  Subway station
-  Train Station
-  Parking
-  Pharmacy
-  Post
-  ATM
-  Restaurant

